



DATA SHEET – MwStop® CHECK VALVE

Technical Data - Standard-Housing

Article no.	Mw985-45-3std	soft-membrane	
	Mw985-55-3std	std-membrane	
	Mw985-65-3std	hard-membrane	
DN	1000		
Diameter	985		
Length	1950 mm		
Range of application	Ø 986 - 1008 mm		
Material case	EN 1.4404/AISI 316L		
Material membrane	EPDM		
Material fastening bracket	EN 1.4404/AISI 316L		
max. backflow pressure	soft-membrane	std-membrane	hard-membrane
	3 m H ₂ O (0,3bar)	5 m H ₂ O (0,5bar)	8 m H ₂ O (0,8bar)
Horizontal opening pressure	329 mm H ₂ O	379 mm H ₂ O	424 mm H ₂ O
Horizontal closing pressure	219 mm H ₂ O	249 mm H ₂ O	279 mm H ₂ O
max. flow velocity	4 m/s		
	Fitting for higher flow velocity on request		

Membranes are hydrogen sulfide (H₂S) resistant

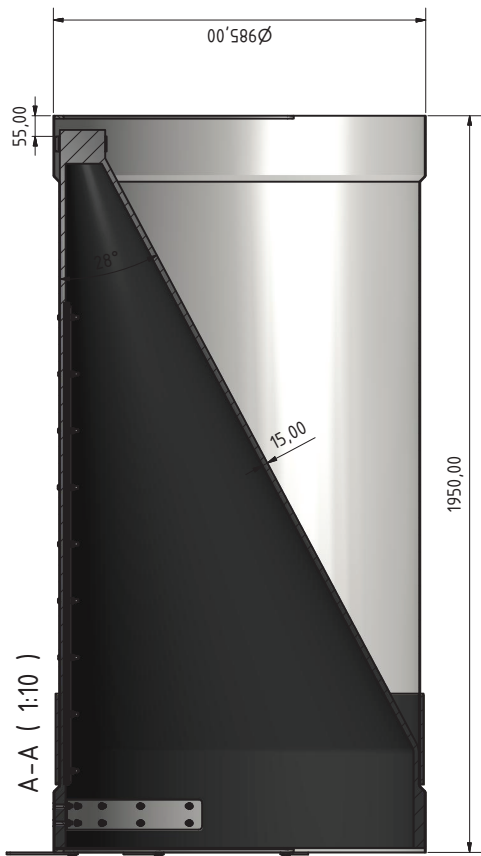
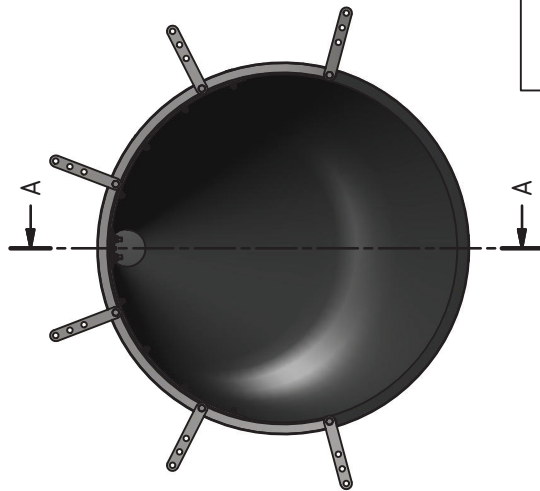
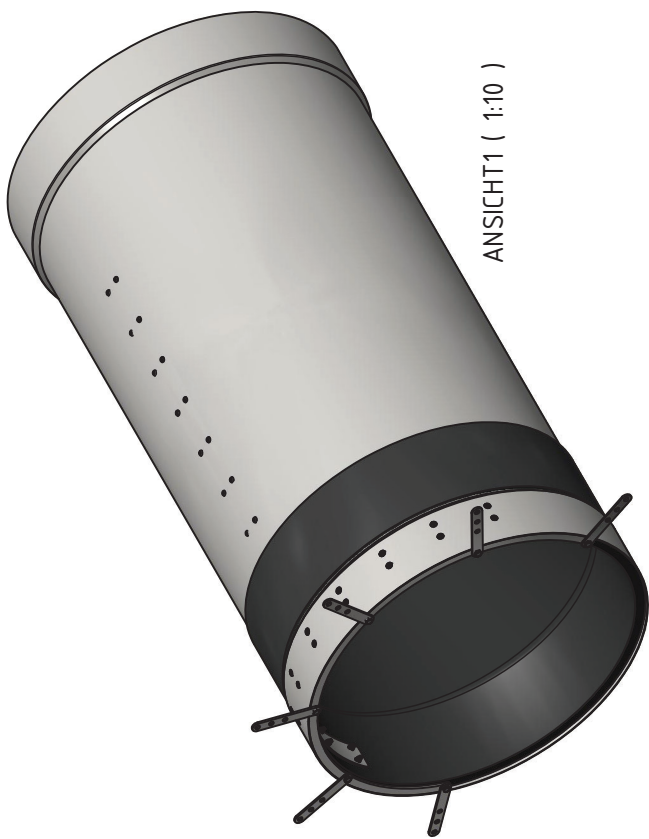
General distribution: MTA Messtechnik GmbH

A - 9300 St. Veit an der Glan, Handelsstr. 14 - 16 | www.mta-messtechnik.at | office@mta-messtechnik.at | T +43 4212 71491

Place of jurisdiction: A - 9300 St. Veit an der Glan, FN 226770 k Company register Klagenfurt,

The current terms and conditions can be found on our website: www.mta-messtechnik.at

Produced by: MTA-Water Products GmbH



MTA		Maßstab 1:10	
Waierproducts GmbH		Projekt: MwStop	
Name	Datum	Name	Datum
Werner	13.03.2018	Werner	13.03.2018
Werner	21.08.2021	Werner	21.08.2021
Material: E60114 & E6011		Baugruppe: DN1000	
Gewicht:		1	
Datei:		A2	

This drawing, like all other drawings, is the property of the company MTA Waierproducts GmbH. It is not to be reproduced, copied, or distributed without the written permission of MTA Waierproducts GmbH. The company MTA Waierproducts GmbH is not liable for any damage or loss of data resulting from the use of this drawing. The company MTA Waierproducts GmbH is not liable for any damage or loss of data resulting from the use of this drawing. The company MTA Waierproducts GmbH is not liable for any damage or loss of data resulting from the use of this drawing.