



DATA SHEET – MwStop® CHECK VALVE

Technical Data – One collar

Article no.	Mw370-45-3oc	soft-membrane	
	Mw370-55-3oc	std-membrane	
	Mw370-65-3oc	hard-membrane	
DN	400		
Diameter	370		
Length	673.20 mm		
Range of application	Ø 363* - 392 mm (with outer sealing) *) Minimum installation dimension with suitable sealing tape (without outer sealing): min. Ø 359 mm		
Material case	EN 1.4404/AISI 316L		
Material membrane	EPDM		
Material fastening bracket	EN 1.4404/AISI 316L		
max. backflow pressure	soft-membrane	std-membrane	hard-membrane
Horizontal opening pressure	3 m H ₂ O (0,3bar)	5 m H ₂ O (0,5bar)	8 m H ₂ O (0,8bar)
Horizontal closing pressure	209 mm H ₂ O	249 mm H ₂ O	279 mm H ₂ O
	144 mm H ₂ O	169 mm H ₂ O	189 mm H ₂ O
max. flow velocity	3 m/s Fitting for higher flow velocity on request		

Membranes are hydrogen sulfide (H₂S) resistant

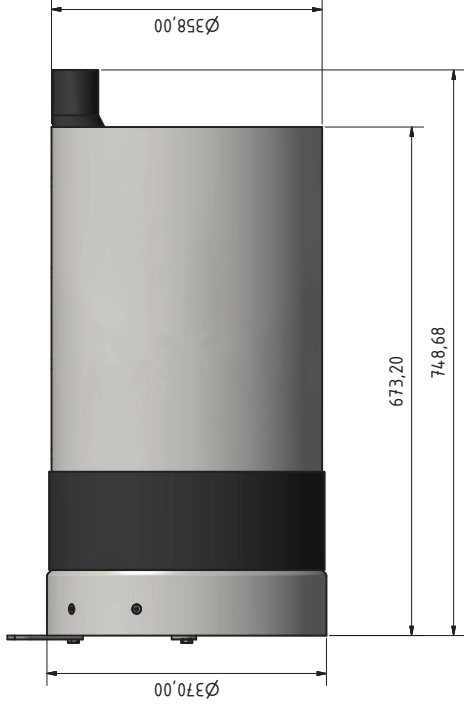
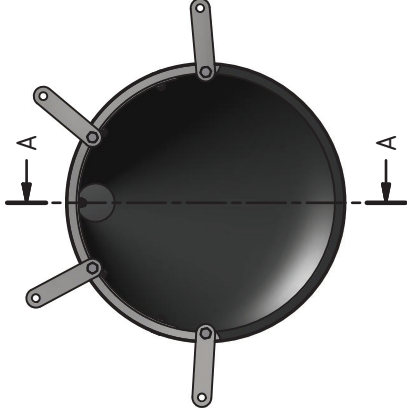
General distribution: MTA Messtechnik GmbH

A - 9300 St. Veit an der Glan, Handelsstr. 14 - 16 | www.mta-messtechnik.at | office@mta-messtechnik.at | T +43 4212 71491

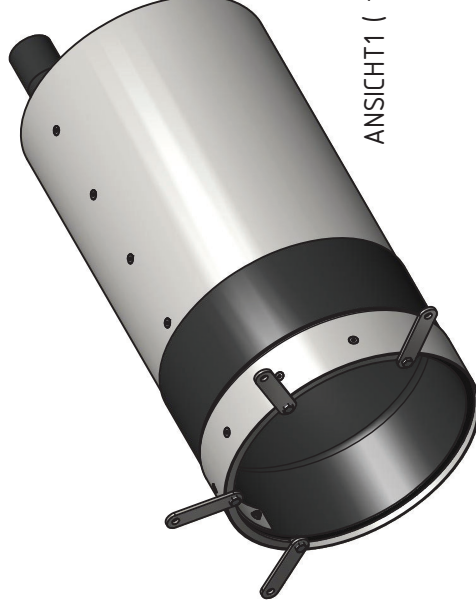
Place of jurisdiction: A - 9300 St. Veit an der Glan, FN 226770 k Company register Klagenfurt,

The current terms and conditions can be found on our website: www.mta-messtechnik.at

Produced by: MTA-Water Products GmbH



A-A (1 : 5)



ANSICHT1 (1 : 5)

MTA		Maßstab 1:5	
Waterproducts GmbH		Projekt: MwStop	
Objekt	Name	A	
0033203	Blauing	DN400_370 Assembly OC	
0139232	Tafelner	Baugruppe: DN400_370 Assembly	
Material: G69048 3.16L4		1	
Gewicht: 25.93.02		A2	
Zustimmung:		Datei:	
Datum:		Seite:	