



# DATA SHEET – MwStop® CHECK VALVE

## Technical Data - PE-Housing

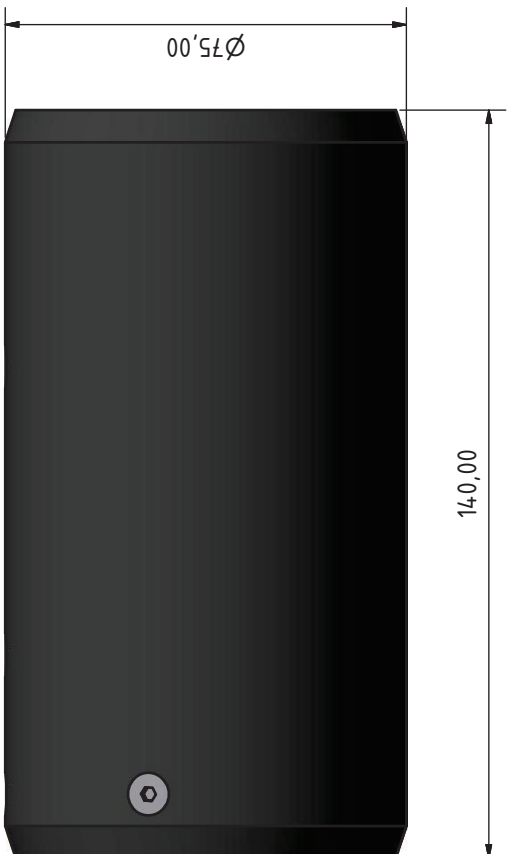
<b>Article no.</b>	Mw075-45-PE	soft-membrane
	Mw075-55-PE	std-membrane
	Mw075-65-PE	hard-membrane

<b>DN</b>	75
<b>Diameter</b>	75
<b>Length</b>	140 mm
<b>Material case</b>	PE (Polyethylen)
<b>Material membrane</b>	EPDM
<b>Material fastening bracket</b>	EN 1.4404/ AISI 316L

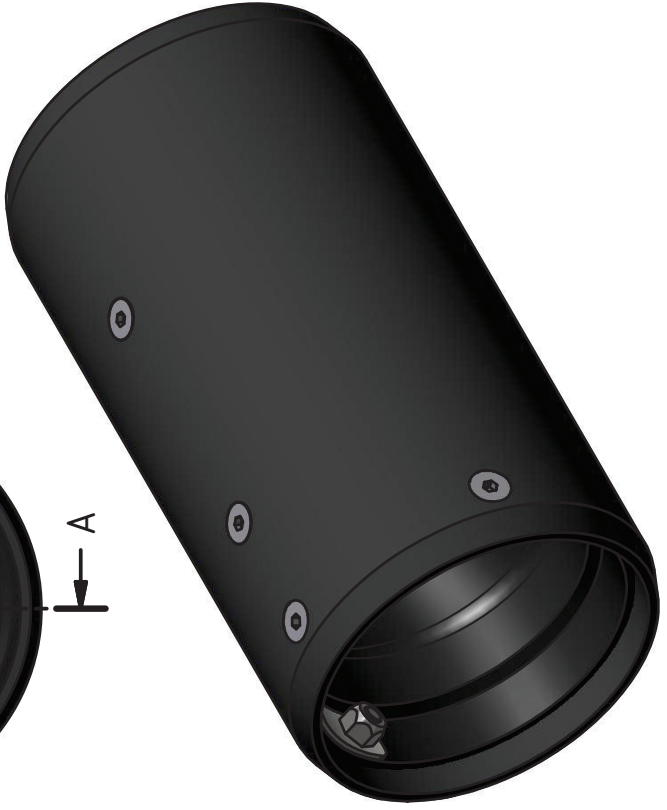
	<b>soft-membrane</b>	<b>std-membrane</b>	<b>hard-membrane</b>
<b>max. backflow pressure</b>	2 m H <sub>2</sub> O(0,3bar)	5 m H <sub>2</sub> O (0,5bar)	8 m H <sub>2</sub> O (0,8bar)
<b>Horizontal opening pressure</b>	139 mm H <sub>2</sub> O	159 mm H <sub>2</sub> O	179 mm H <sub>2</sub> O
<b>Horizontal closing pressure</b>	89 mm H <sub>2</sub> O	104 mm H <sub>2</sub> O	114 mm H <sub>2</sub> O

<b>max. flow velocity</b>	2m/s
	Fitting for higher flow velocity on request

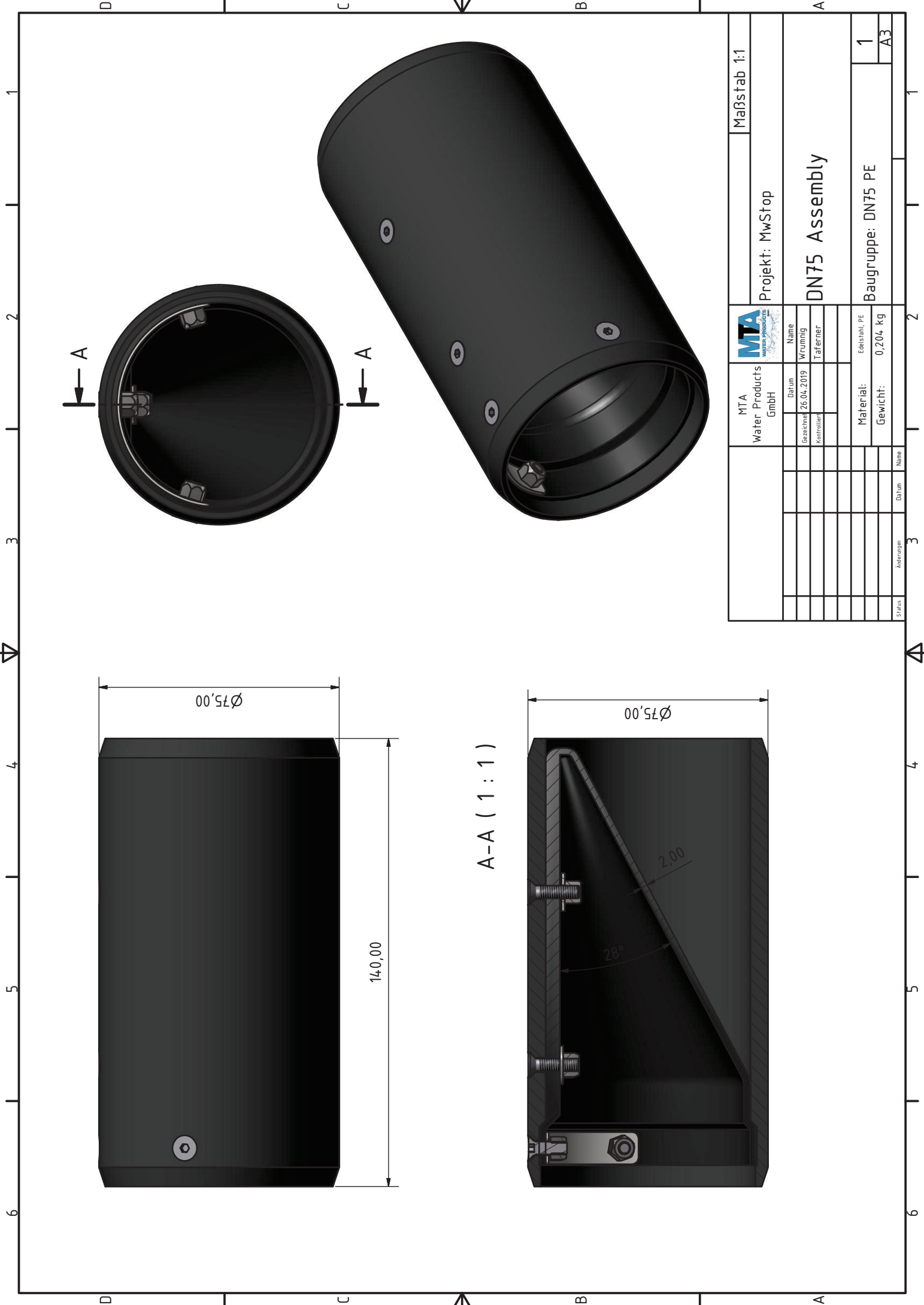
Membranes are hydrogen sulfide (H<sub>2</sub>S) resistant



A-A ( 1 : 1 )



MTA Water Products GmbH		MTA water products		Projekt: MwStop		Maßstab 1:1	
Gezeichnet: 26.04.2019		Datum: 26.04.2019		Name: MTA		DN75 Assembly	
Kontrolliert:		W/running		Taferner		Baugruppe: DN75 PE	
Material: Edelstahl, PE		Material: Edelstahl, PE		Gewicht: 0,204 kg		1	
Status:		Adresse:		Datum:		A3	



This design, as well as the layout and the contents are property of the company MTA Waterproducts GmbH. Without explicit written permission from MTA Waterproducts GmbH, no part of this document may be reproduced, stored in a retrieval system, or transmitted in any form or by any means, electronic, mechanical, photocopying, recording, or by any information storage and retrieval system. All rights reserved. MTA Waterproducts GmbH is not responsible for any damage or loss of data resulting from the use of this document. (Last code: copyright law - Federal law Gazette I 1999, 1243)