



DATA SHEET – MwStop® CHECK VALVE

Technical Data - Standard-Housing

Article no.	Mw590-45-3std	soft-membrane	
	Mw590-55-3std	std-membrane	
	Mw590-65-3std	hard-membrane	
DN	600		
Diameter	587		
Length	1200 mm		
Range of application	Ø 588 - 597 mm		
Material case	EN 1.4404/ASIS 316		
Material membrane	EPDM		
Material fastening bracket	EN 1.4404/ASIS 316		
max. backflow pressure	soft-membrane	std-membrane	hard-membrane
Horizontal opening pressure	3 m H ₂ O (0,3bar)	5 m H ₂ O (0,5bar)	8 m H ₂ O (0,8bar)
Horizontal closing pressure	329 mm H ₂ O	344 mm H ₂ O	384 mm H ₂ O
	204 mm H ₂ O	219 mm H ₂ O	249 mm H ₂ O
max. flow velocity	4 m/s		
	Fitting for higher flow velocity on request		

Membranes are hydrogen sulfide (H₂S) resistant

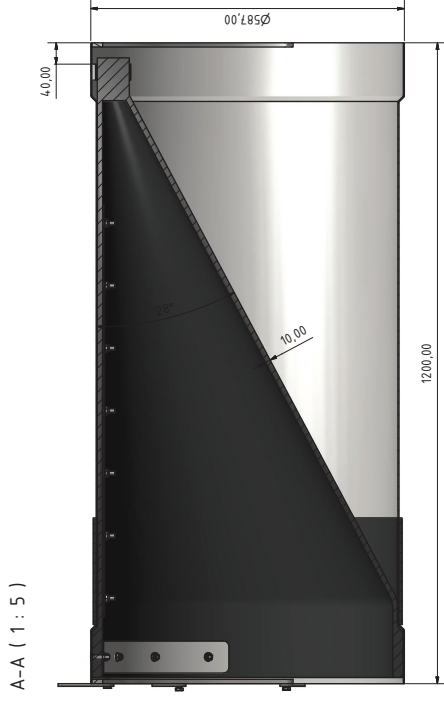
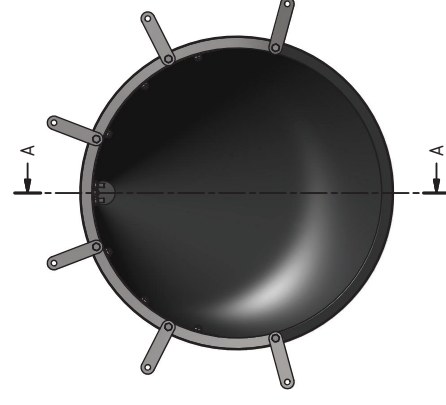
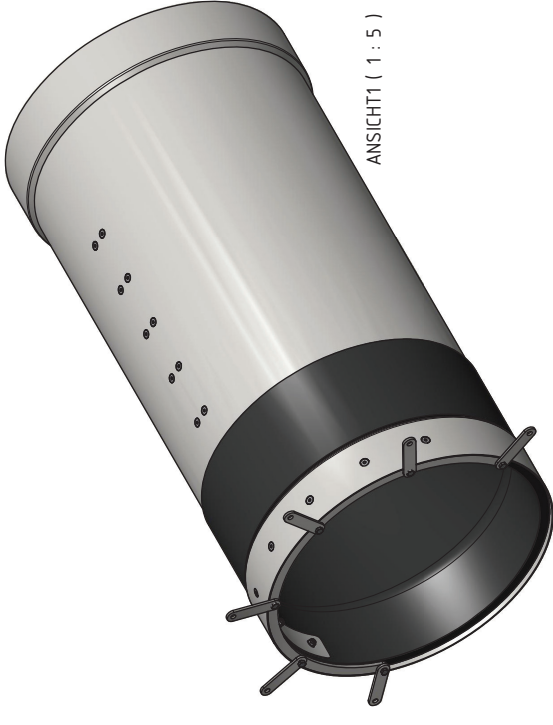
General distribution: MTA Messtechnik GmbH

A - 9300 St. Veit an der Glan, Handelsstr. 14 - 16 | www.mta-messtechnik.at | office@mta-messtechnik.at | T +43 4212 71491

Place of jurisdiction: A - 9300 St. Veit an der Glan, FN 226770 k Company register Klagenfurt,

The current terms and conditions can be found on our website: www.mta-messtechnik.at

Produced by: MTA-Water Products GmbH



MFA		MFA		Maßstab 1:5	
Werkzeuge	Geometrie	Name	Prüfung	Projekt: MwStop	
				DN600 Assembly	
				Baugruppe: DN600 Assembly	1
					AI

Rev.	Änderung	Datum	Ursache
A			
B			
C			
D			
E			
F			
G			
H			
I			
J			