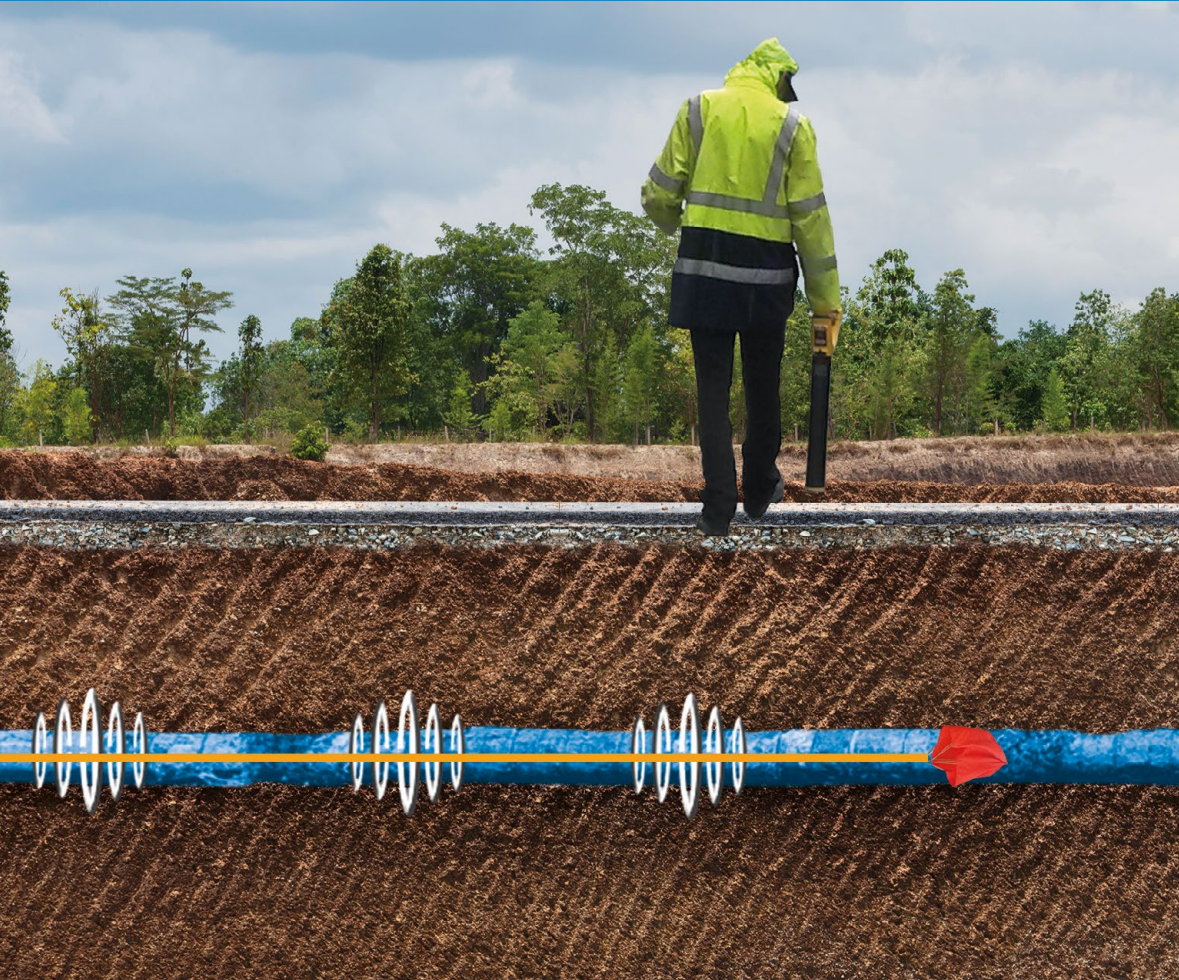




WORLD WIDE WATER



MTA-PPD: Plastic Pipeline Detection

Electromagnetic detection of plastic pipelines



LOCATING PLASTIC PIPELINES

MTA-PPD - PLASTIC PIPELINE DETECTION PROVIDES ACCURATE INFORMATION ON THE LOCATION AND DEPTH OF PLASTIC PIPELINES FOR DRINKING WATER, WASTE WATER AND INDUSTRIAL PIPELINES.

In the electromagnetic locating of plastic pipes, a parachute is inserted under pressure via a tapping clamp into the pipe to be located. With the help of the flowing movement, the parachute unfolds and pulls a locating steel cable after it through a special device.

After reaching the desired flushing length, the parachute is folded down and can be completely removed after the location measurement (position and depth) has been completed in the normal operating state of the pipeline.

APPLICATIONS

- PVC
- PEHD
- AZ
- Concrete
- GFK
- Various non metallic materials

RANGES

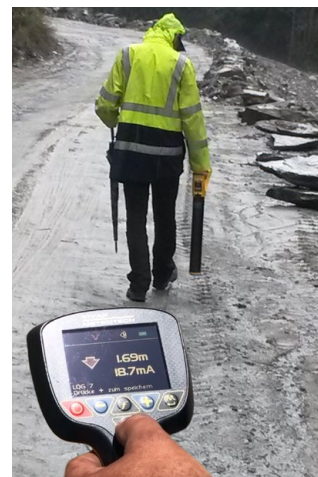
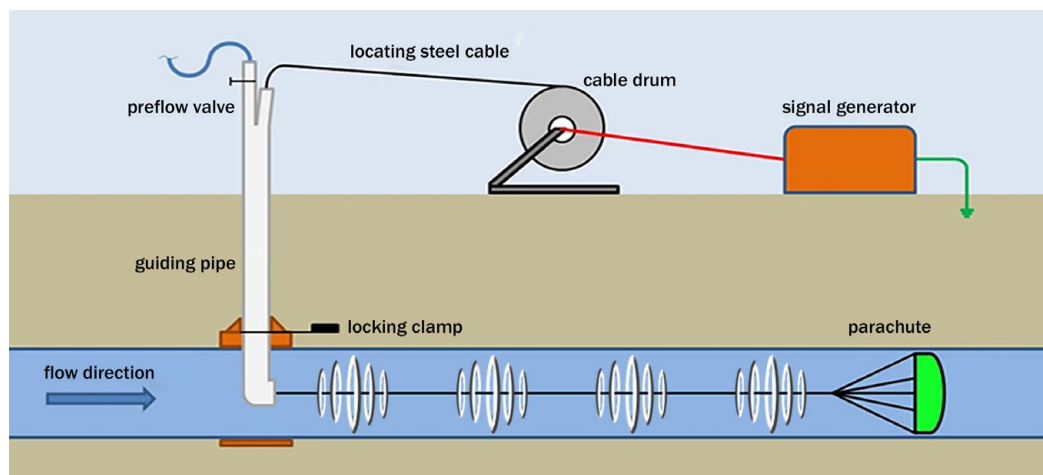
- Local network: up to 2.000m
- Transport line: up to 3.000m
- 90° archable

DIAMETER

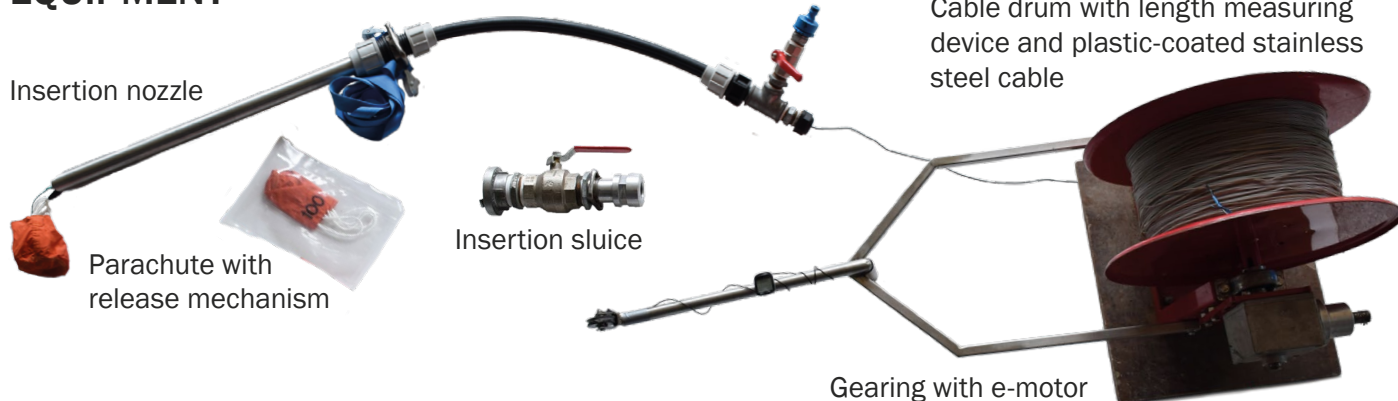
- Suitable for pipe diameter from 25mm up to 2.000mm

TAPPING SLEEVE

- 5/4" to 120mm
- 2" to 400mm



EQUIPMENT



MTA Messtechnik GmbH

Handelsstraße 14-16
 A-9300 St. Veit an der Glan
 T +43 4212 71491
 office@mta-messtechnik.at
 www.mta-messtechnik.at