



Panton McLeod provide two new pipeline services unique to the UK & Irish market

Well known as experts in the inspection, cleaning and maintenance of treated water storage assets such as service reservoirs and contact tanks Panton McLeod are expanding their offering in the field of specialist pipeline services with two new services.

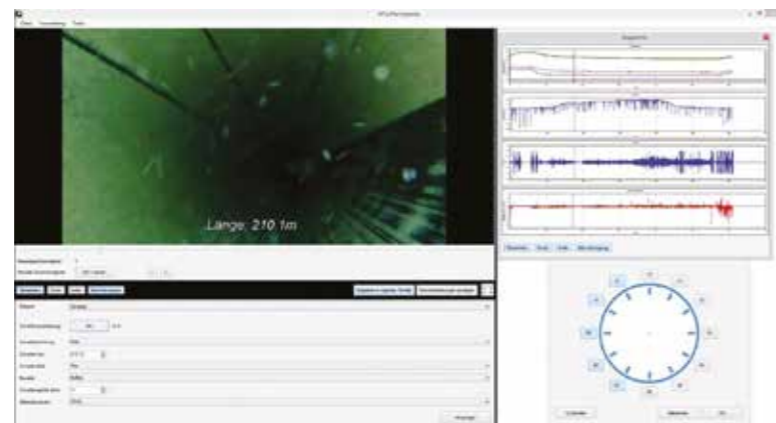
Panton McLeod are now able to offer two products unique in the UK & Irish market, the first allows pipeline condition to be assessed while remaining "in service", and the second provides surface cleaning and preparation ahead of re-lining works.

Partnerships are now in place with to provide the Tomahawk system from Canadian firm Envirolitics Engineering Inc, and the MTA Pipe Inspector technology from Austrian firm MTA Messtechnik GmbH. Discussions are ongoing for identify pilot projects with water companies and their supply chain.

Jim Panton, Panton McLeod's CEO explains the strategy behind the new deals, "As an extension of our service reservoir focused operations we are increasingly supporting the commissioning and testing of new tanks and new pipelines for our clients and partners."

"This has developed now to the provision of cleaning, flushing and decontamination works to existing distribution systems. If you add to this our ability to provide in-tank treatment systems, including mixers and THM reduction solutions through our partnership with PAX Water Technologies in California, we can truly support our clients in their mission of providing the best quality water from treatment works to tap."

MTA Pipe Inspector, MTA Messtechnik GmbH



MTA Pipe-Inspector locates leakages also in non-metallic pipes by recording leak sounds directly at their point of origin, regardless of the pipeline material and diameter

MTA Pipe Inspector is an autonomous leak detection and inspection device that can be deployed into live mains whether they are potable water, waste, hydro or industrial. Once deployed the equipment follows the flow taking HD optical and acoustic readings from a cable-less platform.

The equipment is suitable for pipe diameters from 100mm up to 300mm and can complete sections up to 20km with a single deployment.

Once completed the data is uploaded and assessed by the team at MTA, we are then able to work with our clients to prioritise their investment preventing leakage, turbidity and reducing the frequency of bursts.

FEATURES

- Optical examination
- Sound recording for detection of smallest leakages with pinpoint accuracy down to 10l/h at 5bar operating pressure
- Pressure recording along the entire pipe length
- Turbidity measurement (optional)
- Conductivity measurement (optional)
- Temperature measurement
- Length measurement including meter display
- Video in HD-quality



Tomahawk, Envirolitics Engineering Inc

Tomahawk is a trenchless rehab technology that uses a high-volume, low-pressure airstream to prepare the internal surfaces of pipes.

After preparation, the pipes are left dust free, clean and dry allowing any lining technology to be applied to the pipe wall immediately, including CIPP (cured-in-place pipe) or SIPP (sprayed-in-place pipe) technologies.

Tomahawk can remove tuberculations and old bitumen / tar linings from pipes from 100mm to 300mm in diameter. Unlike other preparation system Tomahawk offers superior cleaning and leaves internal surfaces clean, dry and dust free ready for immediate liner application ensuring a long-term leak-free performance.

The surface preparation is completed by introducing graded abrasives into a high volume low pressure airstream, and by using a vacuum unit to extract the material from the pipe section all waste materials are captured and can be easily removed from site for reuse.



Before

After

Launch of "Into Supply" series

This 5 part series looks at distribution networks and the technology used to both maintain existing assets and commission new assets.

To be included sign up at go.pantonmcleod/supply.

The first edition focuses on the environment and features an introduction from Professor Ian Barker.

To find out more about Panton McLeod's work on new assets and pipelines visit the website www.pantonmcleod.co.uk



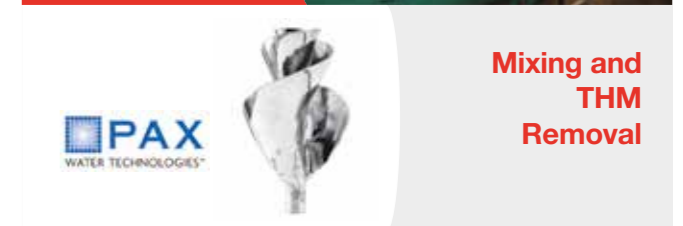
Asset Inspection



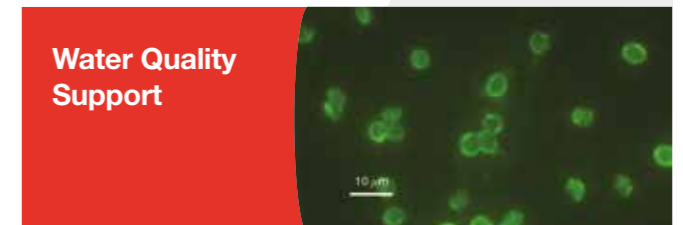
Reservoir Cleaning



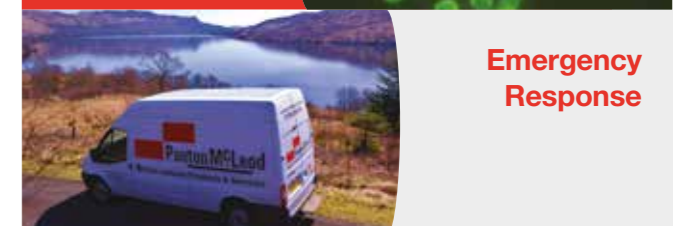
Pipeline Commissioning



Mixing and THM Removal



Water Quality Support



Emergency Response

Water Quality Engineering

www.pantonmcleod.co.uk

Tel : 01896 663 330

