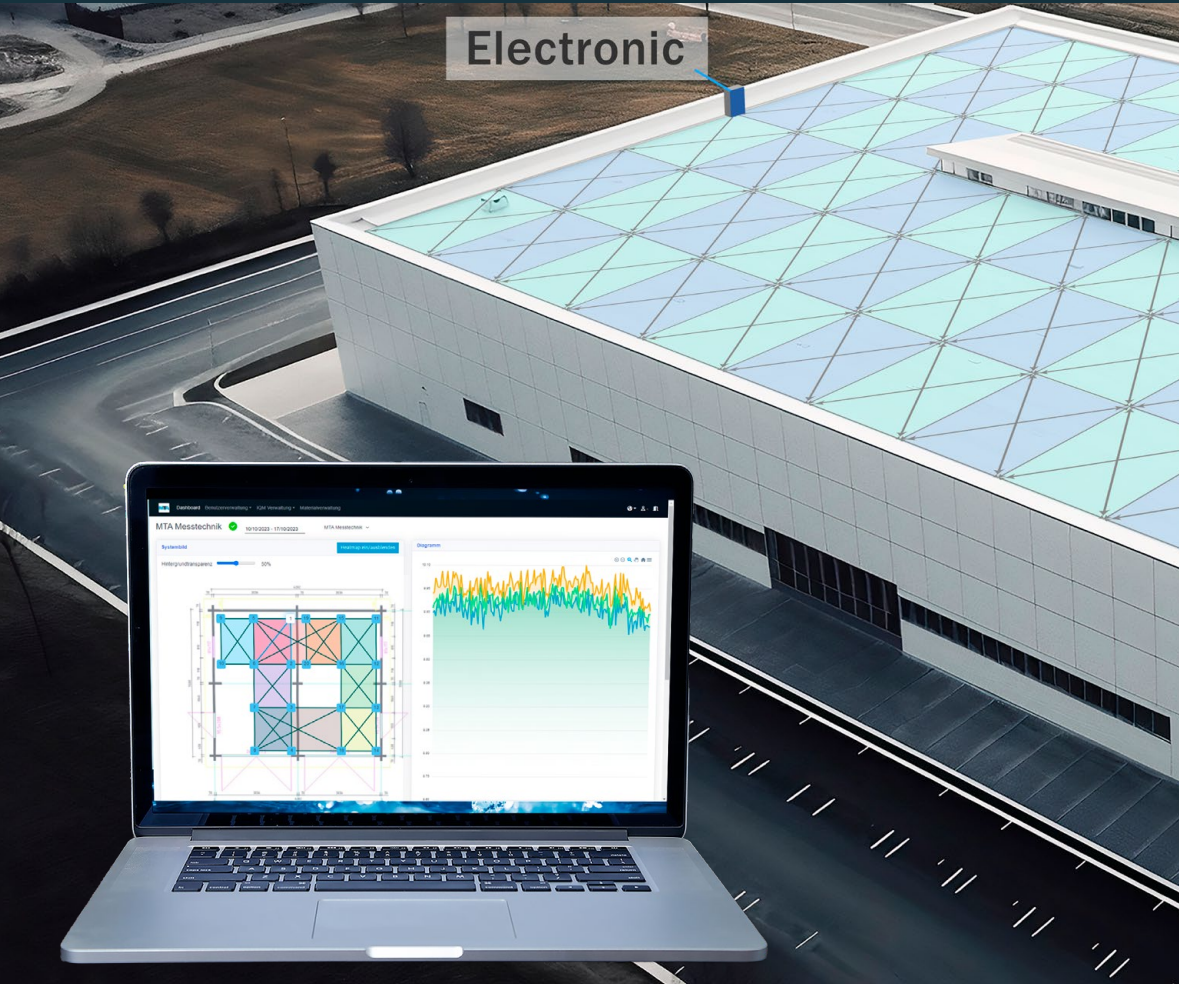




WORLD WIDE WATER



# IQM<sup>®</sup> MONITORING

Full-coverage monitoring by  
means of cross measurements



# IQM<sup>®</sup> MONITORING SYSTEM

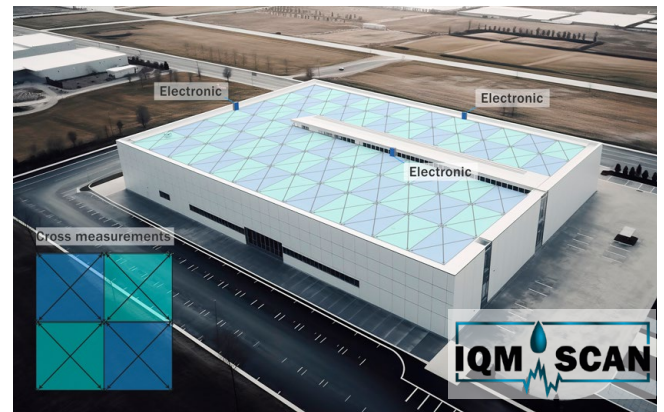
THE NEW MONITORING SYSTEM FOR PERMANENT SURVEILLANCE OF MOISTURE IN ALL TYPES OF FLAT ROOFS USING CROSS MEASUREMENTS. DATA RETRIEVAL VIA WEB INTERFACE - ALARM FUNCTION INCLUDED.

## BRIEF DESCRIPTION

The IQM<sup>®</sup> monitoring system is a reliable measuring system that records the moisture concentration in the roof at freely definable intervals using cross measurements.

Create and manage assets and customer data in the CRM system. Analyses can also be viewed via the web interface at any time and on the move.

The IQM<sup>®</sup> monitoring system automatically notifies stored contacts via an immediate alarm if a limit value is exceeded.



## ADVANTAGES

- System management
- System monitoring and control
- Alarm function to defined contacts
- CRM system - customer management

## SYSTEM INFORMATION

- Long-lasting, robust monitoring system
- Transmission via SIM cards
- Alarm in case of moisture ingress
- Data query via web interface



Suitable for all flat roof types

## OPERATING PRINCIPLE

The permanently installed, highly sensitive measuring probes transmit the measured values to the electronics. These digital values are processed in the electronics and transmitted to the IQM<sup>®</sup> monitoring server via mobile network.

This data can be viewed, checked and analysed from any Internet-enabled device via the IQM<sup>®</sup> web interface.

If the defined limit values are exceeded, the system automatically sends an alarm message to freely definable contacts.



### MTA Messtechnik GmbH

Handelsstraße 14-16  
A-9300 St. Veit an der Glan  
T +43 4212 71491  
office@mta-messtechnik.at  
www.mta-messtechnik.at